

The following steps will demonstrate the easiest installation method while ensuring optimal thermal performance for your project.

In this guide, Foilboard panels are installed directly to the roof purlins using the appropriate Foilboard fasteners.

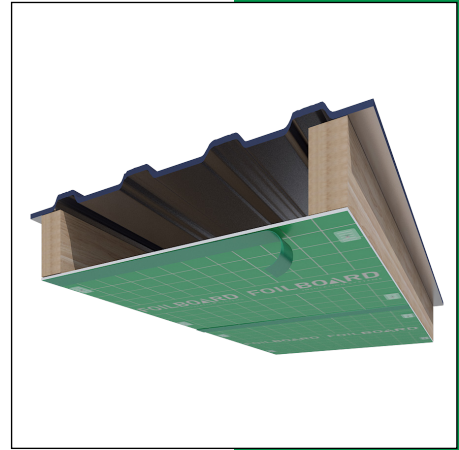
## ACCESSORIES



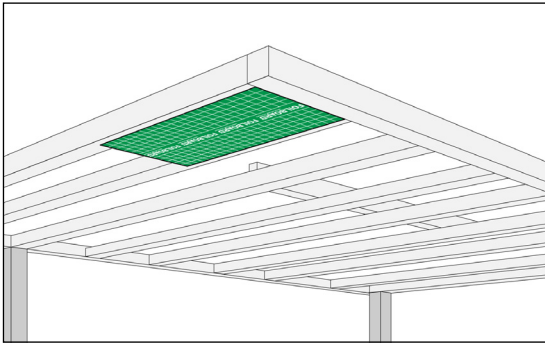
Foilboard Green **OR**  
Silver Joining Tape

Foilboard Fasteners Green 10/15  
**OR** Ultra Fasteners Green 20/25

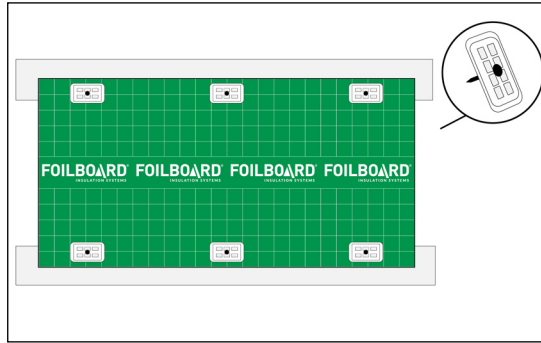
\*Timber or Steel depending on application



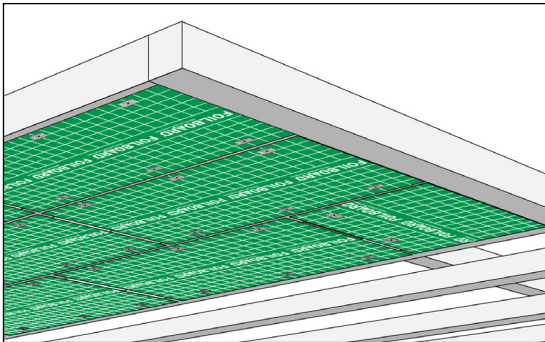
## INSTALLATION



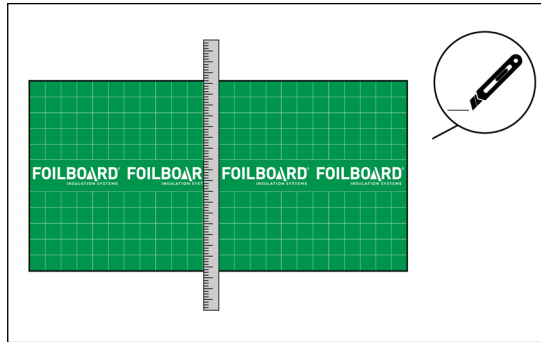
**STEP 1** Position full sized Foilboard panel against the underside of the roof purlins with the anti-glare side facing out.



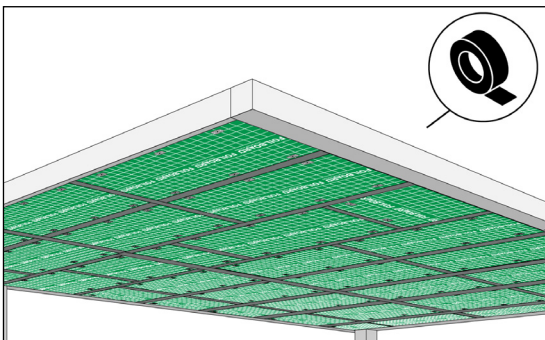
**STEP 2** Fasten the Foilboard panel to the purlins using Foilboard fasteners. Use 5 or 6 per square meter.



**STEP 3** Cut Foilboard panels to fill in smaller areas as needed.



**STEP 4** When cutting, measure the required area, then cut the Foilboard panel to size using a straight edge and a sharp knife.



**STEP 5** Tape any joins or gaps using Foilboard green joining tape.

## PRO TIPS

- Start with using full panels in the largest areas, then fill in smaller areas with smaller off-cuts to minimise wastage.
- Ensure a snug fit of the Foilboard panels.
- Minor gaps can be sealed with a neutral cure silicon.

INFORMATION LINE  
1800 354 717

[www.foilboard.com.au](http://www.foilboard.com.au)

